

L.A.
THEATRE
WORKS

LATW

SUSAN A. LOEWENBERG, PRODUCING DIRECTOR

PROGRAM
2021/22 SEASON

SARAH DREW ADHIR KALYAN STACY KEACH JOSH STAMBERG

TWELFTH NIGHT

By WILLIAM SHAKESPEARE

Adapted and Directed by MARTIN JARVIS



VISIT US AT LATW.org

L.A.
THEATRE
WORKS

LATW

SUSAN A. LOEWENBERG, PRODUCING DIRECTOR

**NOW AVAILABLE
FOR DOWNLOAD**

Tom Stoppard's wildly inventive,
Tony® Award-winning first play



**ROSENCRANTZ AND
GUILDENSTERN**

ARE

DEAD

By **TOM STOPPARD**

Directed by ROSALIND AYRES

PLAYS. STARS. OUTSTANDING LISTENS.

ORDER TODAY AT LATW.ORG OR AUDIOSALES@LATW.ORG

CAST

(in alphabetical order)

Rosalind Ayres Maria
Tara Lynne Barr Olivia
Chris Butler Orsino
JD Cullum Antonio
Sarah Drew Viola
Martin Jarvis Sir Toby Belch
Adhir Kalyan Sir Andrew Aguecheek
Stacy Keach Feste - The Fool
André Sogliuzzo Curio, Fabian, Valentine, Officers,
Priest, Captain
Josh Stamberg Malvolio
Mark Jude Sullivan Sebastian

Adapted and Directed by Martin Jarvis



Season funding provided by:

City of Los Angeles, Department of Cultural Affairs
Los Angeles County Department of Arts & Culture
National Endowment for the Arts
The Ralph M. Parsons Foundation



Twelfth Night was recorded at The Invisible Studios, West Hollywood.

Cover: Sam McCay/Adobe Stock

© 2022 L.A. THEATRE WORKS. ALL RIGHTS RESERVED.

Program Note

What fun we have had with this production of one of Shakespeare's most imaginative plays. Location: the weirdly seductive island of Illyria. Perhaps 'Fantasy Island' might be an alternative title for our modern ears. There's even a touch of Sci-Fi about the plotting when the 'alien' twins are rescued, separately, from shipwreck. Illyria seems to possess a magical logic of its own – fooling folk into believing all kinds of unlikely things including, crucially, that a female voice could be a 'male' one. A timeless comedy-drama of crazy misunderstanding, where illusion and absurdity combine with a bizarre humanity. Ultimately Shakespeare's genius shows us that *love* is really all we need. (With a bit of magic.)

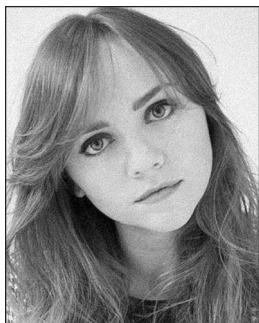
Martin Jarvis, Director

Bios

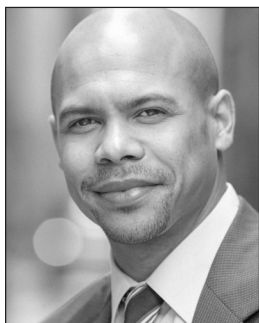


ROSALIND AYRES (*Maria*) is an English actress, director, producer, and writer. Recent movies: *Death Meets Lizolette*, *Hampstead* with Diane Keaton, *One By One* with Christopher Lloyd. Guest-starred in *Disney's Best Friends Whenever* and *Casualty* (UK). Miss Prism in London's acclaimed revival of *The Importance of Being Earnest*. LATW appearances include: *Jefferson's Garden* (Nelly Rose), *An Enemy of the People*

(Mrs. Stockmann), *She Stoops to Conquer* (Mrs. Hardcastle), *The Rivals* (Mrs. Malaprop); plus *Frozen*, *An Ideal Husband*, *A Room With A View*, and *Ayckbourn's Norman Conquests*. As director, her LATW productions encompass *The Goodbye Girl* (which she adapted from the screenplay), *The Little Foxes*, *Watch on the Rhine*, *Amadeus*, *Racing Demon*, *You Never Can Tell*, *Uncle Vanya*, *Enron*, and *The Seagull* and *A Doll House* (both starring Calista Flockhart.) In-studio productions include: *Native Guard* and *Please Continue*. Movies: *Titanic* (Lady Duff Gordon), Oscar-winning *Gods and Monsters* (Elsa Lanchester), and *Beautiful People*. She is Katherine Marlowe in action-adventure video game *Uncharted 3: Drake's Deception*. British screen: Kate and Koji comedy series, *Taking the Flak* with her actor/director husband Martin Jarvis, *Outnumbered* (now on BBC America), *Doctors*, *The Royal*, *New Tricks*, *Poirot*, *Midsomer Murders*. US: *Children's Hospital*, *Just Shoot Me*, *Chicago Hope*, *Profiler*, *A Face to Die For*, *Sabrina the Teenage Witch*. West End: *I, Claudius* (Calpurnia), Michael Frayn's *Exchange* and *Now You Know*. Broadway: Peter Brook's production of *A Midsummer Night's Dream*. BBC radio includes *Lady Windermere's Fan*, Michael Frayn's *Matchbox Theatre*, *Pack of Lies*, *A Small Family Business*, and *Make and Break*. She has directed many major dramas for BBC, especially radio premieres of Mamet's *Glengarry Glen Ross* and *Keep Your Pantheon*, plus William Nicholson's *Shadowlands*. Numerous award-winning audios. Rosalind received the UK Radio Academy's award as Best Drama and Readings Producer for Jarvis & Ayres Productions.



TARA LYNNE BARR (*Olivia*) was recently seen as 'Laura Meyers' in the Jason Reitman series *Casual*, opposite Michaela Watkins and Tommy Dewey. The inaugural season received a Golden Globe nomination for best comedy series and premiered at the 2015 Toronto International Film Festival, where Tara was named by *The Wrap* as one of the 10 breakout stars to watch. Tara also recently wrapped Snapchat's first narrative episodic limited series *No Labels*, produced by Duplass Brothers Productions for writer/director Mason Flink. Previously, Tara played one of the original members of Charles Manson's family on NBC's *Aquarius* opposite David Duchovny, starred in the SXSW Film Festival film *God Bless America*, earning a Best Leading Young Actress nomination, and appeared in Rose McGowan's Sundance short *Dawn*, which was nominated for the Short Film Grand Jury Prize.



CHRIS BUTLER (*Orsino*) is a two-time LA Ovation, NAACP, LADCC and Garland Award winner for *Yellowman* (Fountain Theatre) and *Stick Fly* (Matrix Theatre). Broadway: *110 In The Shade* (Roundabout Theatre Company). Regional theater: *Othello*, *Macbeth*, *How To Catch Creation*, *A Raisin in the Sun*, *The Piano Lesson* (Oregon Shakespeare Festival); *District Merchants*, *Death Of A Salesman* (South Coast

Repertory); *Twelfth Night*, *Romeo and Juliet*, *Much Ado About Nothing* (Shakespeare Center LA); *Race* (A.C.T.); *Twilight*: Los Angeles 1992, *Gem Of The Ocean*, *One Flew Over the Cuckoo's Nest* (Rubicon Theatre Company). T.V: *Women Of The Movement*, *NCIS*, *The Good Fight*, *Designated Survivor*, *The Good Wife*, *Superstore*, *Modern Family*, *Scandal*, *True Detective*, *Major Crimes*, *Justified*, *Shameless*, *24*, *True Blood*, *NCIS: Los Angeles*, *Rizzoli & Isles*, *Law & Order: SVU* and *King & Maxwell*. Film: *Rescue Dawn*, *Cradle 2 The Grave*. Chris holds an MFA in Theatre (University of California at San Diego) and a BA in Dramatic Arts (University of North Carolina at Chapel Hill).



JD CULLUM (*Antonio*) A veteran of Southern California theatre, JD has starred in productions at the Mark Taper Forum, Geffen Playhouse, Kirk Douglas Theater, Pasadena Playhouse, South Coast Repertory, Laguna Playhouse, and the Antaeus Company. Recent stage appearances include: *The Seafarer*, *Clybourne Park* (Laguna Playhouse), *Cripple of Inishmaan*, *The Hothouse* (Antaeus Company), and *All The Way* (South Coast Repertory). On camera: *The Oroville*, *Aquarius*, *Code Black*, and *Bones*. Among his numerous LA Theater Works recordings, he most recently starred in *Oslo*.

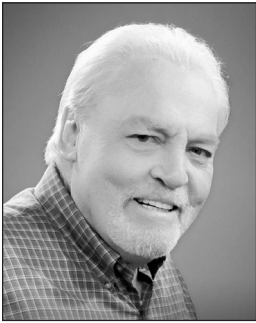


SARAH DREW (*Viola*) is best known for playing 'Dr. April Kepner' on the hit ABC series *Grey's Anatomy*. She can currently be seen starring in the Apple TV+ series *Amber Brown* written, directed, and produced by Bonnie Hunt, based on the best-selling '90s children's book series. Sarah recently signed a two-picture deal with Lifetime to write, produce, and star in holiday movies. The first feature, *Reindeer Games*, will be released in 2022. TV credits include: 'Stacy Rowe' in MTV series *Daria*, 'Hannah Rogers' in Warner Bros.' *Everwood*, *Mad Men* as 'Kitty Romano,' *Supernatural*, *Glee*, and most recently in the Freeform hit *Cruel Summer*. Film Credits include: *Radio*, *Moms' Night Out*, *Indivisible*, *Christmas in Vienna*, *Twinkle All the Way*, and more. She made her directorial debut in *Grey's Anatomy: B-Team the Webisodes* which was nominated for the Primetime Emmy Awards for an Outstanding Short Form Comedy or Drama Series in 2018. Theatre credits include her Broadway and West End debut as 'Eugenie Loyer' in *Vincent in Brixton* (John Golden Theater/The Ambassador Theatre Group), and regionally as 'Ellie Dunn' in *Heartbreak House* (Berkshire Theater Festival), 'Emily Imbrie' in *Third* (Geffen Playhouse), and 'Juliet' in *Romeo and Juliet* (McCarter Theatre). She resides in Los Angeles with her husband Peter, children Micah and Hannah, and rescue dog, Lucy.

MARTIN JARVIS (*Sir Toby Belch*) see Director's bio



ADHIR KALYAN (*Sir Andrew Aguecheek*) was most recently seen playing the role of 'Al' in the CBS sitcom *United States of Al*. He previously appeared in the Amazon Studios' feature film *Chemical Hearts*, starring Lili Reinhart, as well as Chris and Nick Riedell's independent film *A Nice Girl Like You* alongside Lucy Hale, and had a recurring role in the 5th Season of *Arrested Development*. He starred in the FOX series *Second Chance*, and recurred in the Jill Soloway Amazon series *I Love Dick* with Kevin Bacon and Kathryn Hahn. Adhir is also known for his scene-stealing series role of 'Timmy' in *Rules of Engagement* for 5 seasons, the fish out of water 'Raja' on the critically acclaimed series *Aliens in America*, and the memorable 'Dr. Raj Paresch' on *Nip/Tuck*. Adhir's additional feature credits include *Paul Blart: Mall Cop*, *Youth in Revolt* opposite Michael Cera, *No Strings Attached* with Natalie Portman and Ashton Kutcher, the Jason Reitman directed feature *Up in the Air* with George Clooney, *High School* opposite Adrien Brody, and Will Gluck's *Fired Up*.



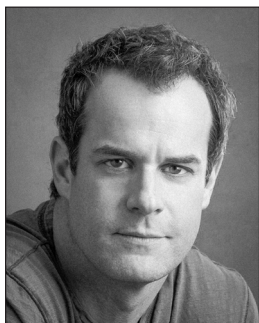
STACY KEACH (*Feste - The Fool*) is one of the founding members of L.A. Theatre Works, having starred in *Galileo*, *Death of a Salesman*, *Uncle Vanya*, and *Mary Shelley's Frankenstein*, among many other roles. Recently, when the Coronavirus struck, and after zooming the title role in an adaptation of *King Lear*, he and wife, Malgosia, formed Stacy Keach Zoom Theater. Since then he has zoomed *Cat On A Hot Tin Roof*, *Hughie*, *The Unexpected Man*, David Storey's *Home*, Lanie Robertson's *The Gardener*, and Barrymore, and most recently, playing 'Sigmund Freud' in a world premiere, *Vienna*. TV credits: *Mike Hammer*, *Titus*, *Two and a Half Men*, *Blue Bloods*, *Prison Break*, *NCIS: New Orleans*, *The Blacklist*, *Man with a Plan*, *American Greed*.
Filmography: *Gotti*, *Truth*, *Gold*, *Fat City*, *Nebraska*, *If I Stay*, *Bourne Supremacy*, *Sin City: A Dame To Kill For*, *The Ninth Configuration*, *Doc*, *Up In Smoke*, *American History X*, *The Long Riders*, and *The New*

Centurions. Performance Honors: Best Actor Golden Globe, 3 Obies, 3 Vernon Rice Awards, 2 Drama Desk Awards, 3 Helen Hayes Awards, the Millennium Recognition Award, the Shakespeare Will Award, nominations for Emmy and Tony Awards, and most recently, the International Satellite Mary Pickford Lifetime Achievement Award. In 2015, he was inducted into the American Theatre Hall of Fame and in 2019 he received a star on the Hollywood Walk of Fame. Author: *All in All*, an award-winning memoir. Mr. Keach was a Fulbright scholar to LAMDA, and attended UC Berkeley and Yale. He has been married to his beautiful wife Malgosia for 34 years. They have two children, son Shannon, and daughter Karolina.



ANDRÉ SOGLIUZZO (*Curio, Fabian, Valentine, Officers, Priest, Captain*) Best known for: *Mank, Missing Link, Love, Death, and Robots, Being George Clooney, Transformers: Revenge of the Fallen, The Polar Express, You've Got Mail, Looking for Richard*, and the 'Cheshire Cat' in *Alice Through the Looking Glass*. He is a frequent performer with LATW (*Oslo, Daniel Deronda, The Goodbye Girl, Frost/Nixon, Salomé, Cyrano de*

Bergerac, As You Like It, Act One), and is frequently on *Family Guy, American Dad, Elena of Avalor*, and as *Puss in Boots* for DreamWorks TV. Listed by IMDB - Top 25 Greatest Video Game Voice Actors of All Time. Top titles include: *Back 4 Blood, Sekiro, The Elder Scrolls, Spyro Reignited Trilogy, Assassin's Creed, Guild Wars, Mafia 1, 2 & 3*, and was selected by Al Pacino to voice 'Tony Montana' in *Scarface: The World is Yours*. André assisted in the vocal restoration of *The Good, The Bad, and The Ugly*, and Orson Wells' *The Other Side of the Wind*. His voice-match artistry includes Russell Crowe, Jack Nicholson, Clint Eastwood, and many others. He provided over 20 voices for Oliver Stone's series *The Untold History of the United States*, can currently be heard in the haunting Holocaust documentary *Who Will Write Our History*. He's made frequent appearances on *Jimmy Kimmel Live!* and *Last Week Tonight with John Oliver*. His short film *NEAR CHANGE*, for which André directed, starred, edited, and wrote and performed the music, was and 'Official Selection' worldwide in over 40 film festivals from Malibu to Mumbai. For more info: www.andresogliuzzo.com.



JOSH STAMBERG (*Malvolio*) is an actor who works steadily in film, television and theater. He can currently be seen in the HBO series *The Time Traveler's Wife*, as well as the Marvel/Disney+ series *WandaVision* opposite Elizabeth Olsen. He was also recently seen opposite Russell Crowe in the Showtime Roger Ailes series *The Loudest Voice* as 'Bill Shine'. Other credits include *The Affair*, *Nashville*, *Parenthood*, *Drop Dead*

Diva, and *Distracted*, a play in which he starred opposite Cynthia Nixon at Roundabout Theatre Company. He will next appear opposite Claire Danes in the FX limited series *Fleishman is in Trouble*. Stamberg works frequently with L.A. Theater Works and the Ojai Playwrights Conference. He lives in Los Angeles.



MARK JUDE SULLIVAN (*Sebastian*) is excited to return to L.A. Theatre Works, where he's performed in *The Thanksgiving Play*, *Spill*, *Act One*, *Amadeus*, *Romeo and Juliet* and others. L.A. theatre credits include: *All's Well That Ends Well* (A Noise Within), *Tilda Swinton Answers an Ad on Craigslist* (Celebration Theatre, Edinburgh Fringe Festival), *Good Grief* (Kirk Douglas Theatre), *Casa Valentina* (Pasadena Playhouse),

Immediate Family (Mark Taper Forum), and *A Mere Conception*, *Private Eyes*, and *Lobby Hero* (InHouse Theatre). Broadway: *To Be or Not To Be* (Manhattan Theatre Club). NY: *The Dining Room* (Keen Company - Drama Desk Award), *Surface to Air* (Symphony Space). Regional: *The Whipping Man* and *The Sisters Rosensweig* (Old Globe Theatre), *A Midsummer Night's Dream* (Actors Theatre of Louisville), *The Merry Wives of Windsor* (Shakespeare Theatre Company), *Measure for Measure* and *Melissa Arctic* (Folger Shakespeare Theatre), *The Cripple of Inishmaan* (Studio Theatre), and *Big Death*, *Little Death* and *After Ashley* (Woolly Mammoth Theatre). Film: *Bear With Us*. TV: *Scandal*, *For the People*, *Why Women Kill*, *Pan Am*, and *As The World Turns*. Mark's play *Dark Spirits* won the OffFest Award for Best Online Play at the 2021 Edinburgh Fringe Festival.



MARTIN JARVIS (*Director*) British actor/director Martin Jarvis recently starred at the Garrick Theatre in London's West End as Prime Minister Edward Heath in *Maggie and Ted*. He also starred (with Rosalind Ayres) in the acclaimed revival of *The Importance of Being Earnest*. And received the Theatre World Award for his performance as 'Jeeves' on Broadway. As director for L.A. Theatre Works, Martin's productions encompass world-class dramas: from *God of Carnage* to *Fathers and Sons*, *Copenhagen* and *Galileo* to *The Rivals*, *She Stoops to Conquer* and many star-studded Shakespeare audio-recordings. His numerous acting appearances for LATW cover *The Browning Version*, *Shadowlands*, *Racing Demon*, *Uncle Vanya*, *You Never Can Tell* and comedies by Ayckbourn and Frayn. In the UK Martin has spear-headed West End and National Theatre plays and directed many BBC dramas: *Goldfinger* starring Ian McKellen; *Monologues* with Judi Dench, Helen Mirren, Stacy Keach; *Lady Windermere's Fan* with Mira Sorvino. Martin remarks, 'I have the doubtful distinction of appearing in the highest grossing movie of all time, *Titanic*, and the lowest, *United Passions!*' Other movies: *Girl with the Dragon Tattoo*, *Phil Spector*, *Wreck-It Ralph*, *The Bunker*, *Buster*, *Taste the Blood of Dracula*. TV includes: *Doctor Who*, *Law & Order*, *Endeavour*, *Funny or Die*, *Cosmos*, *Numb3rs*, *Stargate Atlantis*, *Murder She Wrote*, *Walker Texas Ranger*, *Marple*, *Poirot*, *Morse*, *David Copperfield*, *Nicholas Nickleby*, *The Forsyte Saga*. Countless audiobooks include *P.G Wodehouse*, *Michael Frayn* and *Just William* titles and whizz-bang thrillers. Video games: 'Alfred' in *Batman* and 'Finn McMissile' in *Cars 2*. He is the author of two bestselling theatre books: *Acting Strangely* and *Broadway, Jeeves?* With Rosalind Ayres he is founder of award-winning Jarvis & Ayres Productions. Martin is invested by HM the Queen as Officer of the British Empire (OBE) for his services to Drama.

ANNA LYSE ERIKSON (*Senior Producer*) is Producer at L.A. Theatre Works, having served as senior producer, casting director, and literary manager for over 100 L.A. Theatre Works live recordings, in-studio recordings, and tours. Producing highlights: *A Walk in the Woods* (Earphones Award 2019, Audiofile Magazine's Best Audio Books 2019), *Disgraced* (Audie Award

Nominee 2018), and the critically acclaimed 2014-15 National Tour of *In the Heat of the Night*. Directing credits include: Mary Shelley's *Frankenstein* (L.A. Theatre Works), *Circle Mirror Transformation* (The Workroom), *A Night with Tennessee Williams* (University of Colorado-Boulder), *Rose* (University of Missouri-Columbia). She was previously a founder and Artistic Director of VAGABOND, Director of Development for the Morgan-Wixson Theatre, Director of Outreach and Development for Independent Actors Theatre, and a casting director and producing consultant for various commercial, film, theatre, and audio drama projects. Anna Lyse received a B.A. in Theatre Performance from the University of Missouri-Columbia, and an M.A. in Theatre History, Theory, and Criticism from the University of Colorado-Boulder, both with highest honors.

SUSAN ALBERT LOEWENBERG (*Producing Director*) is founder and Producing Director of L.A. Theatre Works, a non-profit media arts and theatre organization. Ms. Loewenberg has produced award-winning radio dramas, plays, and films in Los Angeles, New York, Chicago, and London. Under her supervision, LATW has created the largest library of plays on audio in the world, garnering numerous awards from the Corporation for Public Broadcasting, the Writers Guild, The American Library Association, Publishers' Weekly, and others. Ms. Loewenberg also serves as host and is the Executive Producer of LATW's nationally distributed syndicated radio series, "L.A. Theatre Works," broadcast on NPR stations nationwide. A graduate of Sarah Lawrence College, she has served on innumerable boards and panels, including the National Endowment for the Arts, California Arts Council, The Fund for Independence in Journalism in Washington D.C., and was co-chair of the League of Producers and Theatres of Greater Los Angeles. From 1996-2002, Ms. Loewenberg served during the Clinton administration on the Board of Directors for Federal Prison Industries, a presidential appointment, and served for several years as a member of the regional panel of the President's Commission on White House Fellows. She is a former member of the Board of Directors of The Center for Public Integrity having served 20 years, and a Fellow of the Los Angeles Institute for the Humanities at USC. Ms. Loewenberg is the author of a number of articles that have appeared in American Theatre Magazine, The Los Angeles Times, and various professional journals.

RONN LIPKIN (*Senior Radio Producer*) After graduating from Haverford College with a BA in Music History, Ronn worked as a staff announcer and production director for WYSP-FM in Philadelphia, helping to create the legendary rock station's distinctive sound. He later moved to KLSX-FM in Los Angeles and worked as a staff announcer, recording engineer and producer, creating award-winning radio commercials for national and regional clients. For L.A. Theatre Works, he serves as music supervisor for live productions, lead podcast and radio producer, and curator for the company's audio library. He is also an editor and creative consultant for a number of leading audiobook publishers.

MARK HOLDEN (*Studio Owner*) has over two decades of experience producing, recording and mixing various creative projects in studios, on sets, and on live stages. He has designed, recorded and mixed over 250 plays, live shows and national tours for L.A. Theatre Works, the BBC and dozens of production houses, arts organizations and podcast companies. As a composer and producer, Mark understands that communication and comfort are essential to a creative space, which is why he created The Invisible Studios in West Hollywood, CA. This commercial production and post-production environment is home base for the many projects overseen by Mark and his team. Using his adapting, consulting and project management experience, he helps both new and established dramas take flight in the audio drama renaissance. Most recently Mark directed and produced *Dust: Horizons* for *Gunpowder & Sky*. He has composed for radio, film, and television such as scoring the award-winning feature film *Out in the Dark*. Additionally, he has written, produced, and engineered for several genres of music and worked with some of the biggest names in commercial and creative voice talent. Mark currently serves as board chair of *Rogue Artists Ensemble*: rogueartists.org. Learn more about Mark and his team at: theinvisiblestudios.com.



JEFF GARDNER (*Foley Artist*) has performed live sound effects with LATW over the last ten seasons. Highlights include: *Amadeus*, *American Buffalo*, *As You Like It*, *Under Milk Wood*, *August: Osage County*, *The Motherf**ker with the Hat* as well as touring nationally with *Judgment at Nuremberg*. Jeff is an actor/sound designer born and raised in Los Angeles. Sound design credits include *Blues For An Alabama Sky* (Mark Taper Forum), *Native Son*, *Cat on a Hot Tin Roof*, *Picnic* (Antaeus Theatre Company); *Punkplay, Trevor* (Circle X Theatre); *American Saga: Gunshot Medley*, *Les Blancs*, *Honky* (Rogue Machine); *The Wolves*, *The Cake*, *Dry Land* (Echo Theater), as well as *Seven Guitars*, *A Raisin In The Sun*, *The Madwoman of Chaillot* (A Noise Within). Acting credits include: *The Liar*, *Macbeth*, *King Lear* (Antaeus Theatre Company); *Little Women* (Kennedy Center, National Tour); *Henry V* with Harry Hamlin (The Shakespeare Theatre); *Our Town* with Calista Flockhart, and *The Seagull* with Gwyneth Paltrow and Christopher Walken (Williamstown Theatre Festival). Jeff has also toured with his award-winning solo show, *Kill Your Television* for the Seattle Fringe and Hollywood Fringe Festivals.

SPECIAL THANKS

CHARLES CARROLL (*Recording Engineer and Mixer*) for The Invisible Studios, West Hollywood

DAVID WILSON & CHARLES CARROLL (*Editing & Sound Design*)

TITO H. SALAZAR (*The Invisible Studios Coordinator*) Certified Covid-19 Compliance Officer.

LATW Supporters

Platinum Circle (\$100,000+)

Alfred P. Sloan Foundation

Gold Circle (\$50,000 - \$99,999)

NoVo Foundation

Executive Producers (\$25,000 - \$49,999)

Marcy Carsey

Producers (\$10,000 - \$24,999)

Anonymous

California Arts Council

Campizondo Foundation

Heather & Paul Haaga

Robin & Gary Jacobs

Beth & Michael Kasser

The Ralph M. Parsons Foundation

The Shubert Foundation

Co-Producers (\$5,000 - \$9,999)

Patty Glaser & Sam Mudie

Sherry Bebitch Jeffe

Lyn & Norman Lear

Lillian Lovelace

Associate Producers (\$2,500 - \$4,999)

Elizabeth & Louis Altman

Sharon & Steve Erikson

The Rosalinde and Arthur Gilbert Foundation

Cragg Hines & Robert B. Crane — in memory of Doug Jeffe
and in honor of Sherry Bebitch Jeffe

Eileen Lawrence

Debbie & Gregg Oppenheimer

Ariane & Lionel Sauvage

Beegie Truesdale & Bill Carrick

Williams/Pasquin Trust

Sustaining Patrons (\$1,000 - \$2,499)

Debra & Dave Alpert

Daniel Castellaneta & Deborah Lacusta

Tallie & George Dennis

Elisabeth Familian

Alan Finkel

Marilyn & Barry Hinden

Simon Helberg & Jocelyn Towne
Norman Kopolof & Leslie Falick
Susan Albert Loewenberg & Ezra Suleiman

Anne & Barry Munitz

Shveta & Raj Patel

Beverly & Norman Pine

David Rambo & Ted Heyck

Rosenthal Family Foundation

Bill Schneider

Tony Silbert/Silbert Consulting

Valerie Sopher

Andrea Weiss & Dr. Jerry Whitman
Dan White

Ensemble Patrons (\$500 - \$999)

Paul Ashkenaz

Jim Bagley

Barbara Berg

Judith Blumenthal

Paula Brand

David Braun

Gina & John Despres

Sarah & Chris Dusseault

Eric Engel & Ronda Fox

Nancy Englander

The Finzen-Clark Family Foundation

Cindy & Ron Furst

Suzanne Gallant

Carrie Hidding/teamCFO

Mark Holden

Martin Jarvis & Rosalind Ayres

Dr. Leonard & Stella S. Kleinrock

Sarah Morris & John Papadopoulos

Judith Pacht & Dr. H. Kenneth Fisher

Vicki Pearlson

Joyce Rey

Patti & Donald Ross

Steven Ross & Linda Kent

David & Chip Selby

Christina Snyder & Marc Seltzer

Joan & Robert Stern

Taffy Stern

Sandy & Jon Willen – in honor of Susan Loewenberg

Patrons (\$250 - \$499)

Anonymous

Rick Albert

David Auburn

Diane Corwin Okarski & David Okarski – in memory of
Norman Corwin & Katherin Locke Corwin

Leilani Lattin Duke

Betsy & Bob Eaton — in memory of Doug Jeffe

Nancy & George Franko

Nan & Alan Goodman

Thomas S. Graves

Judy & Jeff Harris

Jane Kaczmarek

Cathryn & Barry Kaye

Peter Kazaras & Armin Baier

The Keach Family

Sharon Keith

Barbara & Bob Klein

Yvette & Ellis Landau

Paula A. Levine & Bernard D. Beitman

Raquel & Bert Lewitt

Lawrence Lokman & Ronda Seaton — in memory of Doug Jeffe

Mr. & Mrs. Gary Marsh

Valerie & Dr. Jack Melmed

Virginia & John Merriam

Micheline Nanterre

Jennifer N. Owens-Ornellas & Jay T. Ornellas

Ron Rapoport

Rose & Allen Resnick

Lydia Roberts

Gayle & Lee Rodgers

Dr. Bushra Rothstein

Peggy Saferstein

Helene Smookler

Louise Spitzer

Tom Virtue

Dorothy Wolpert

January & Edward Woods

Friends (\$100 - \$249)

Francine Abrams

Florence Agcawili

Ellen Albert & David Griggs

Joan August

June Bartczak

Joan Barton

Frank Belz & Judy Kerner

Ahuva Braverman

Deirdre Bronchick

Constance Burg

Karla Champion

Lynn Christian

Michele Cobb

Laurie Cohn

Charles L. Cron

Christy Daily & Robert Fajardo

Judith de Luce

Patty & Jerry Dicker

Anne Dougherty & David Dobrikin

Rena & Peter Falk

John D. Goldenberg

William Goldman & Marynell Hadrych

Karen Hardcastle

Marcia & Paul Herman

Nicholas Hormann

Cheryl Howard

Joel D. Hyatt & Susan E. Green

Barbara Isenberg

Jane Jelenko

Martha R. Jones & Paul Zerella

Steven Llanusa

Karen & Walter Loewenstern

Celeste & Robert Marin

Stanly McInnis – in memory of Ed Asner

Rev. Dr. Laura McKnight

Rozann Newman

Susana Nierlich

Gary Pearlson – in memory of Scott Willis

Judith Reichman, MD

David Rodes
Suzanne Rosentswieg
Karen Rothenberg & Jeffrey Seltzer – in honor
of Susan Loewenberg
Lisa Rowley
Cheryl & Stuart Shapiro
Marlene Sklar & Joel Moskowitz
Dory & Isaac Soffer
Sophie Suleiman
Donald Tamaki
Ros & Simon Templeman
Elizabeth & Vincent Tornabene
Carolyn & Clay Vreeland
Susan L. Wampler & Stan Wedeking
Tadeusz Wellisz & Carolyn Feruzzi Wellisz
Nicole & Carl Williams
Sallie Zemlin-Kisor & Robert B. Kisor
Camilla Meyer Winkler

Based on annual giving between 12/13/2020 and 12/13/2021. To report a misspelling or omission, please contact Vicki Pearlson at vpearlson@latw.org. Your gift is deeply appreciated by all of us here at L.A. Theatre Works, and any errors will be corrected in our next program.

Thank you for supporting theatre in Los Angeles!

L.A. THEATRE WORKS

BOARD OF DIRECTORS

Gary N. Jacobs, President

Aviva Covitz, Vice President

Vicki Pearlson, Secretary

Alan Finkel, Treasurer

•

Annette Blum

Hector Elizondo

Sherry Bebitch Jeffe

Eileen Lawrence

Linda Lichter

Susan Albert Loewenberg

Raj Patel

Karen Rothenberg

Gary Scott

Beegie Truesdale

ARTIST ADVISORY COUNCIL

Rosalind Ayres
Doris Baizley
Ed Begley Jr.
Emily Bergl
Seamus Dever
Sarah Drew
Richard Dreyfuss
Simon Helberg
Martin Jarvis
Stacy Keach
Marsha Mason
Richard Masur
Alfred Molina
Amy Pietz
Larry Powell
David Rambo
David Selby
Josh Stamberg
Eric Stoltz
Susan Sullivan
Jocelyn Towne
JoBeth Williams
Charlayne Woodard

L.A. Theatre Works Staff

Producing Director Susan Albert Loewenberg

Managing Director Vicki Pearlson

Producer Anna Lyse Erikson

Marketing Director Fritz Meier

Senior Radio Producer Ronn Lipkin

Audio Sales Director Michele Cobb

Creative Services Director Sam McCay

Live Events Manager Stacey Martinez

Bookkeeper Teri Allen

Office Manager Cyndi Gonzales

Publicity Lucy Pollak Public Relations

L.A.
THEATRE
WORKS

LATW

SUSAN A. LOEWENBERG, PRODUCING DIRECTOR

**NOW AVAILABLE
FOR DOWNLOAD**

Adapted by KATE McALL
from the Novel by

**ERNEST
HEMINGWAY**

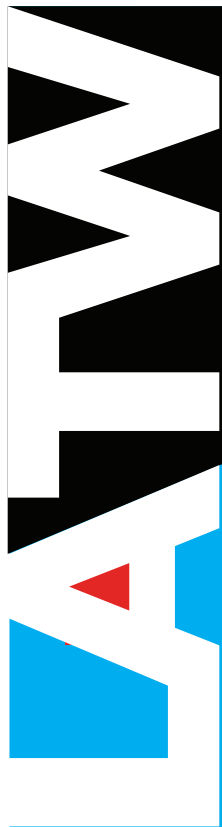
Directed by
ANNA LYSE ERIKSON



**THE SUN
ALSO RISES**

PLAYS. STARS. OUTSTANDING LISTENS.

ORDER TODAY AT LATW.ORG OR AUDIOSALES@LATW.ORG



JOIN US

GIVE TO L.A. THEATRE WORKS

Your gift will bring theatre to the World...

Support live shows in L.A. and on tour in the U.S. and internationally. Help fund our free weekly radio show, podcasts and streaming, heard across the U.S., in China, and worldwide. Donate a title to your community library and give free downloads from iTunes, Google Play and our website.

...and to the Classroom

Give free recordings and curricular materials to thousands of students across the country. Help us develop apps, databases and other digital teaching tools that use theatre to teach English, history, science and more at middle, high school and university levels.

Visit LATW.org/join to learn more about the perks of annual membership, or to make a general tax-deductible donation.

Customized Giving and Sponsorships

For information on individual customized giving and business sponsorships, please contact our Development Department at 310-827-0808 x231.

Contributions are tax deductible to the extent allowed by law.

L.A. Theatre Works is a non-profit 501(c)(3) organization.

Fed ID# 95-3181653

L.A. THEATRE WORKS

Susan Albert Loewenberg, Producing Director